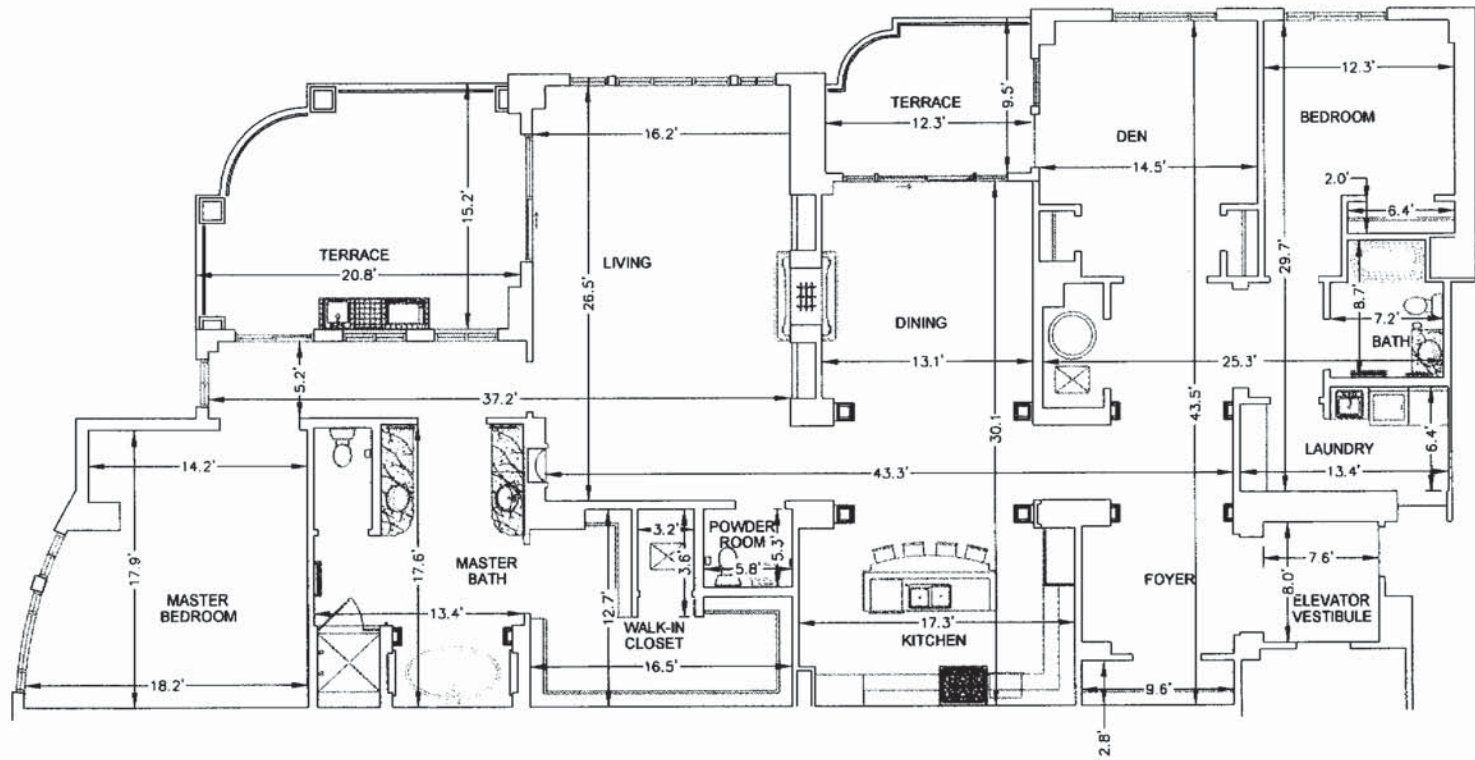


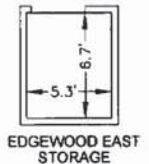
One Water Place Condos

ONE WATER PLACE

A CONDOMINIUM, IN UNDIVIDED TOWNSHIP 2 SOUTH,
RANGE 22 WEST, OKALOOSA COUNTY, FLORIDA
JUNE 2007



BUILDING TWO EDGEWOOD UNIT ADDRESS
405
505
605
705
805
905
1005
1105
1205
1405
1505



Destin Real Estate
Tim Shepard
BrowseDestin.com

BUILDING #2 EDGEWOOD-EAST TYPICAL FLOOR PLAN

PREPARED BY:
Gustin, Cotham & Tucker, Inc.
CIVIL ENGINEERING/LAND SURVEYING
121 HART STREET NICEVILLE, FL 32578 (850) 678-5141

**ONE WATER PLACE
A A CONDOMINIUM**

- NOTES:**
- UNIT DIMENSIONS SHOWN HEREON MAY VARY 0.2±.
 - SEE SHEET 7 of 23 FOR STORGE ROOM LOCATION

BK: 2792 PG: 2980