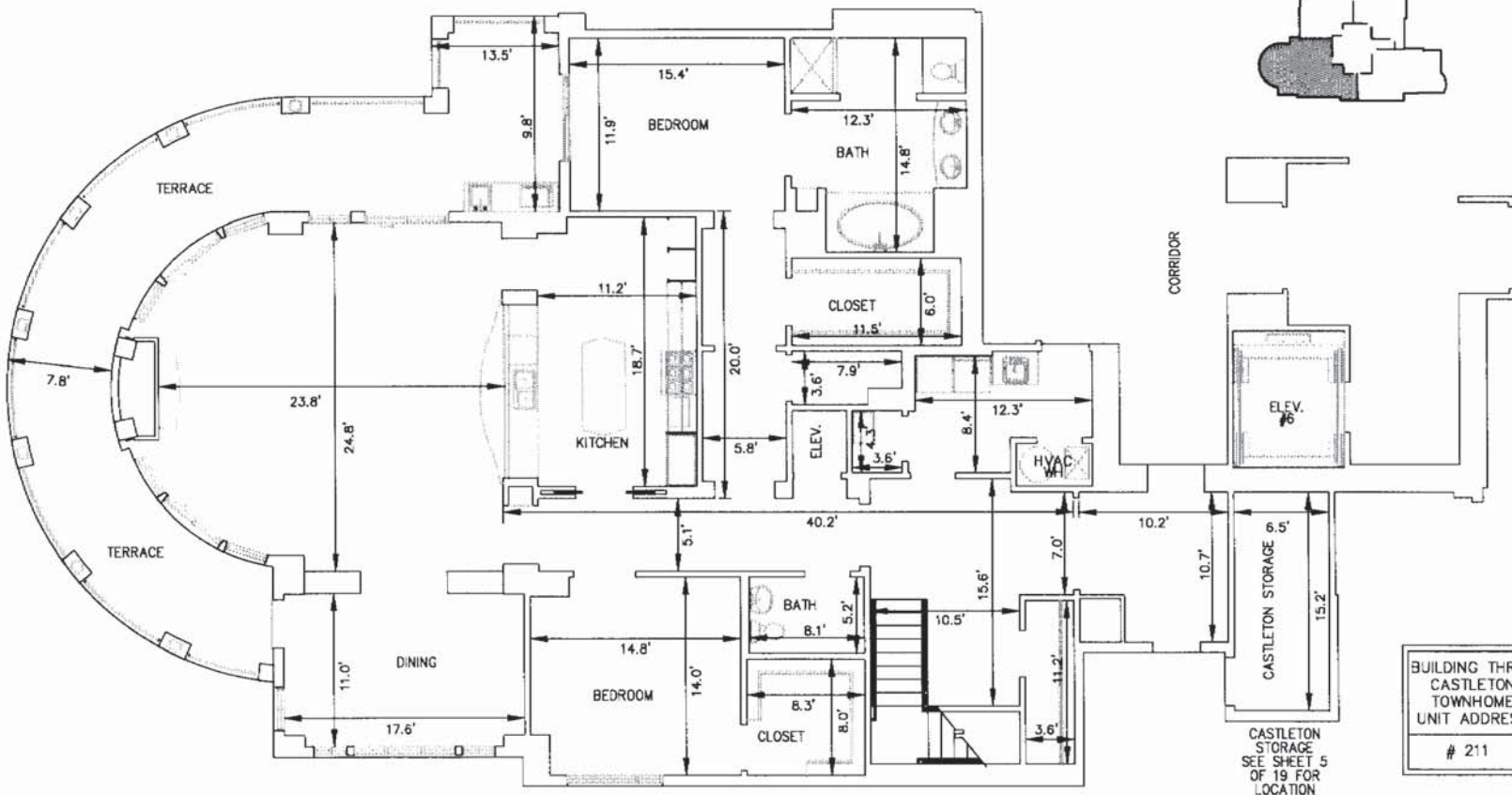


# ONE WATER PLACE AT KELLY PLANTATION

One Water Place Condos for Sale

A CONDOMINIUM - PHASE II,  
IN UNDIVIDED TOWNSHIP 2 SOUTH, RANGE 22 WEST, OKALOOSA COUNTY, FLORIDA

JULY 2007



BUILDING THREE  
CASTLETON TOWNHOME  
UNIT ADDRESS  
# 211

CASTLETON STORAGE  
SEE SHEET 5  
OF 19 FOR  
LOCATION

Destin Real Estate  
Tim Shepard  
BrowseDestin.com

## CASTLETON TOWNHOME FIRST FLOOR

**NOTES:**

1. UNIT DIMENSIONS SHOWN HEREON MAY VARY 0.2±.



**TYPICAL UNIT PLAN**

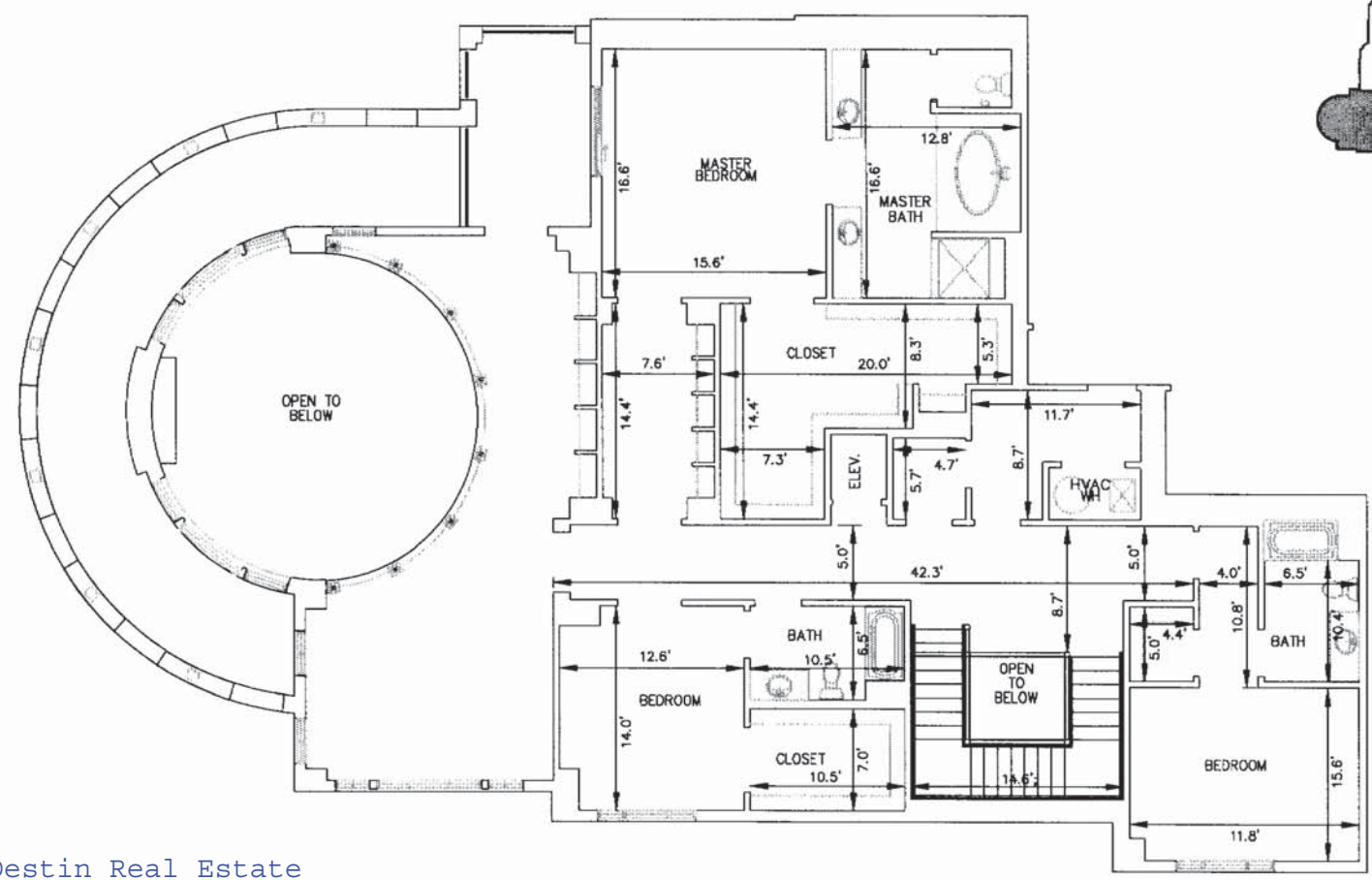
PREPARED BY:  
**Gustin, Cothran & Tucker, Inc.**  
CIVIL ENGINEERING/LAND SURVEYING  
121 HART STREET MIDVILLE, FL 32078 (904) 978-3141

ONE WATER PLACE AT KELLY PLANTATION  
A CONDOMINIUM - PHASE II

# ONE WATER PLACE AT KELLY PLANTATION

One Water Place Condos for Sale

A CONDOMINIUM - PHASE II,  
IN UNDIVIDED TOWNSHIP 2 SOUTH, RANGE 22 WEST, OKALOOSA COUNTY, FLORIDA  
JULY 2007



BUILDING THREE  
CASTLETON TOWNHOME  
UNIT ADDRESS  
# 211

Destin Real Estate  
Tim Shepard  
BrowseDestin.com

## CASTLETON TOWNHOME SECOND FLOOR

### TYPICAL UNIT PLAN

PREPARED BY:  
 Gustin, Cothran & Tucker, Inc.  
CIVIL ENGINEERING/LAND SURVEYING  
121 HART STREET NICEVILLE, FL 32578 (850) 878-5141

ONE WATER PLACE AT KELLY PLANTATION  
A CONDOMINIUM - PHASE II

NOTES:  
1. UNIT DIMENSIONS SHOWN HEREON MAY VARY 0.2±.