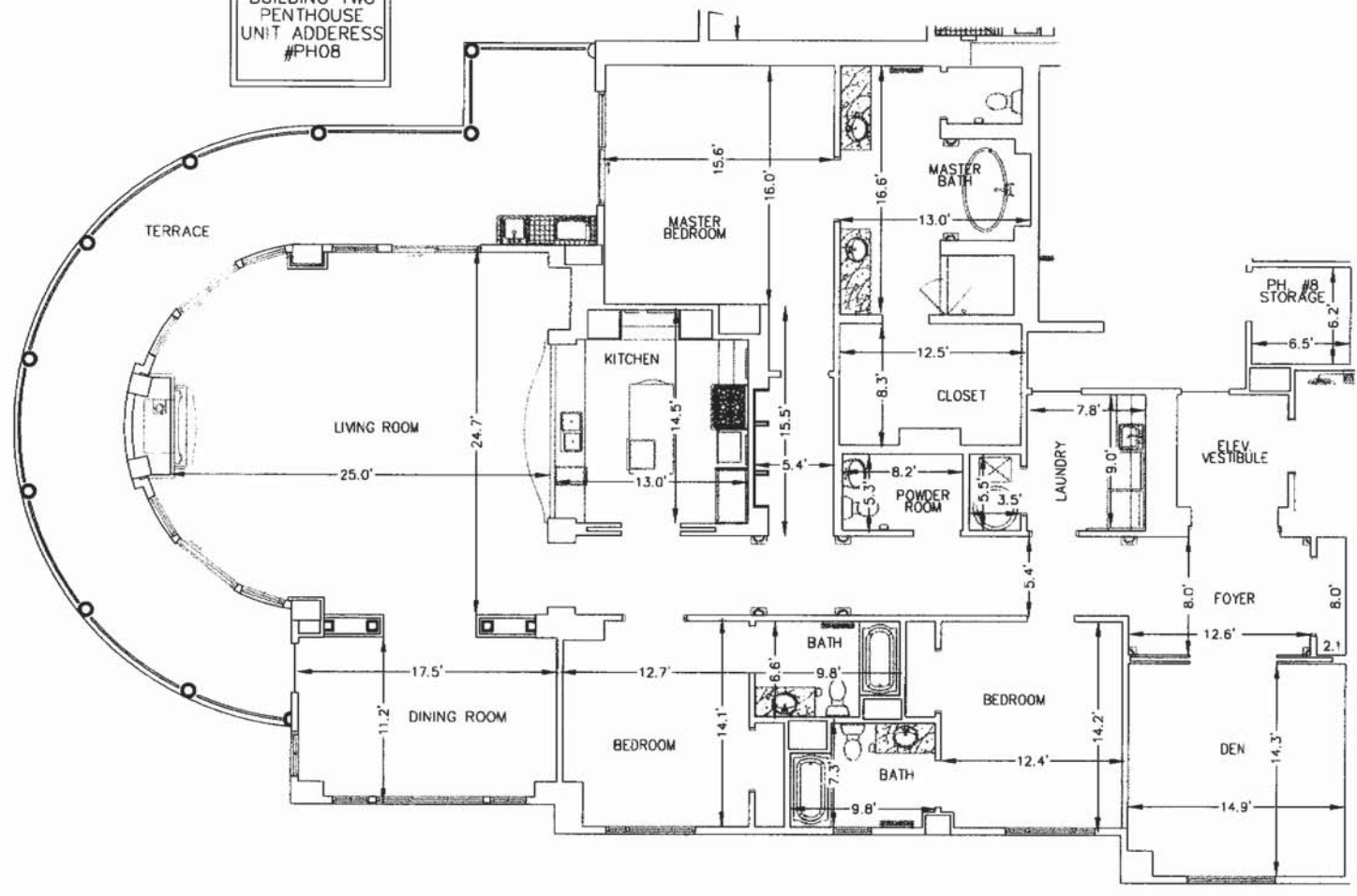


One Water Place Condos

# ONE WATER PLACE

A CONDOMINIUM, IN UNDIVIDED TOWNSHIP 2 SOUTH, RANGE 22 WEST, OKALOOSA COUNTY, FLORIDA  
JUNE 2007

BUILDING TWO  
PENTHOUSE  
UNIT ADDRESS  
#PH08



**BUILDING #2  
UNIT G WEST  
#PH08  
TYPICAL FLOOR PLAN**

**NOTES:**

1. UNIT DIMENSIONS SHOWN HEREON MAY VARY 0.2±.
2. SEE SHEET B of 23 FOR STORAGE ROOM LOCATION

Destin Real Estate  
Tim Shepard  
[BrowseDestin.com](http://BrowseDestin.com)

PREPARED BY:  

**Gustin, Cothran & Tucker, Inc.**  
 CIVIL ENGINEERING/LAND SURVEYING  
 121 HART STREET NICEVILLE, FL 32578 (850) 678-5141

**ONE WATER PLACE  
A CONDOMINIUM**

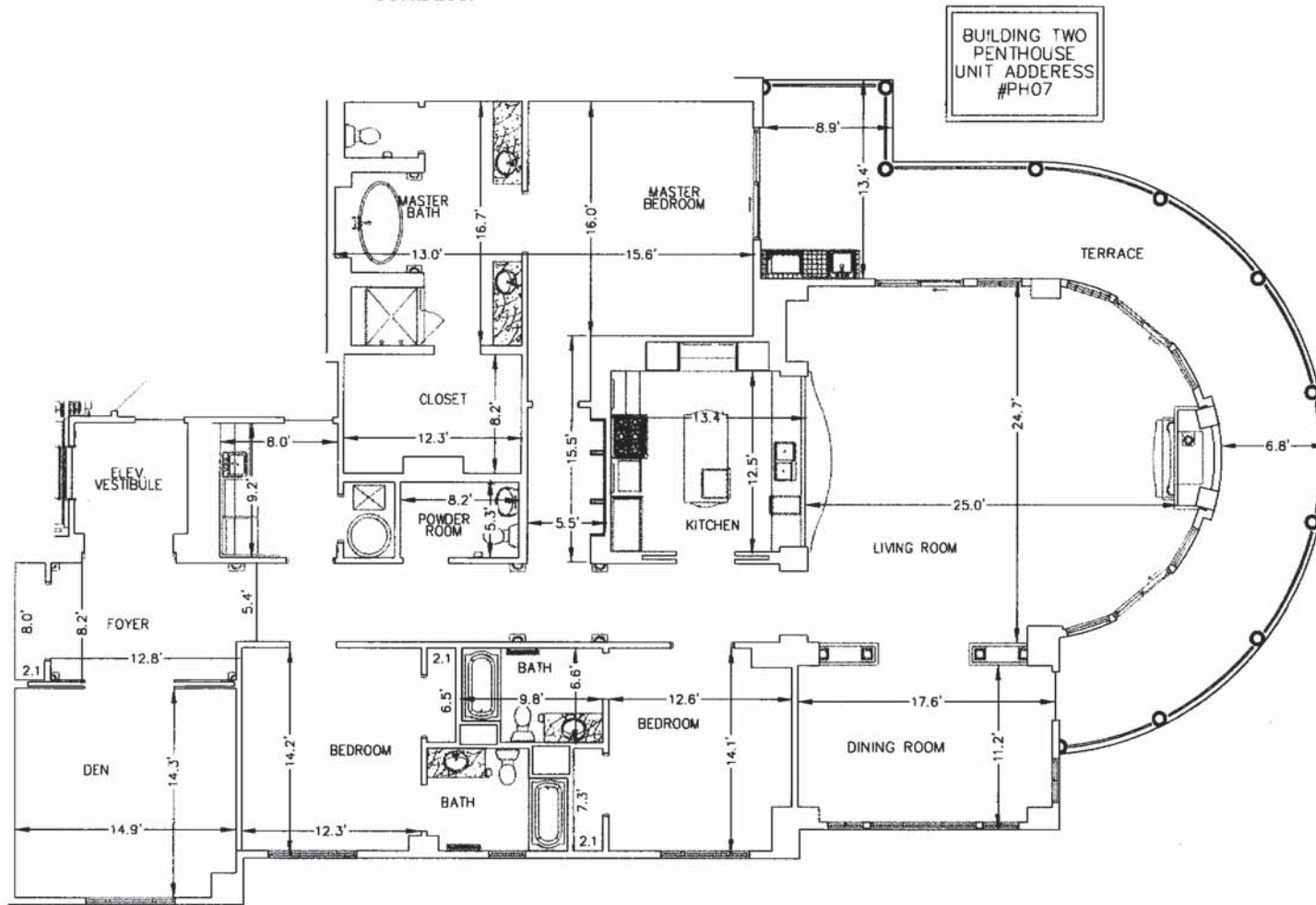
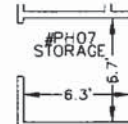
BK: 2792 PG: 2988

# ONE WATER PLACE

A CONDOMINIUM, IN UNDIVIDED TOWNSHIP 2  
SOUTH, RANGE 22 WEST, OKALOOSA  
COUNTY, FLORIDA  
JUNE 2007

One Water Place Condos

BUILDING TWO  
PENTHOUSE  
UNIT ADDRESS  
#PH07



**NOTES:**

- 1. UNIT DIMENSIONS SHOWN HEREON MAY VARY 0.2±.
- 2. SEE SHEET 8 of 23 FOR STORAGE ROOM LOCATION

Destin Real Estate  
Tim Shepard  
[BrowseDestin.com](http://BrowseDestin.com)

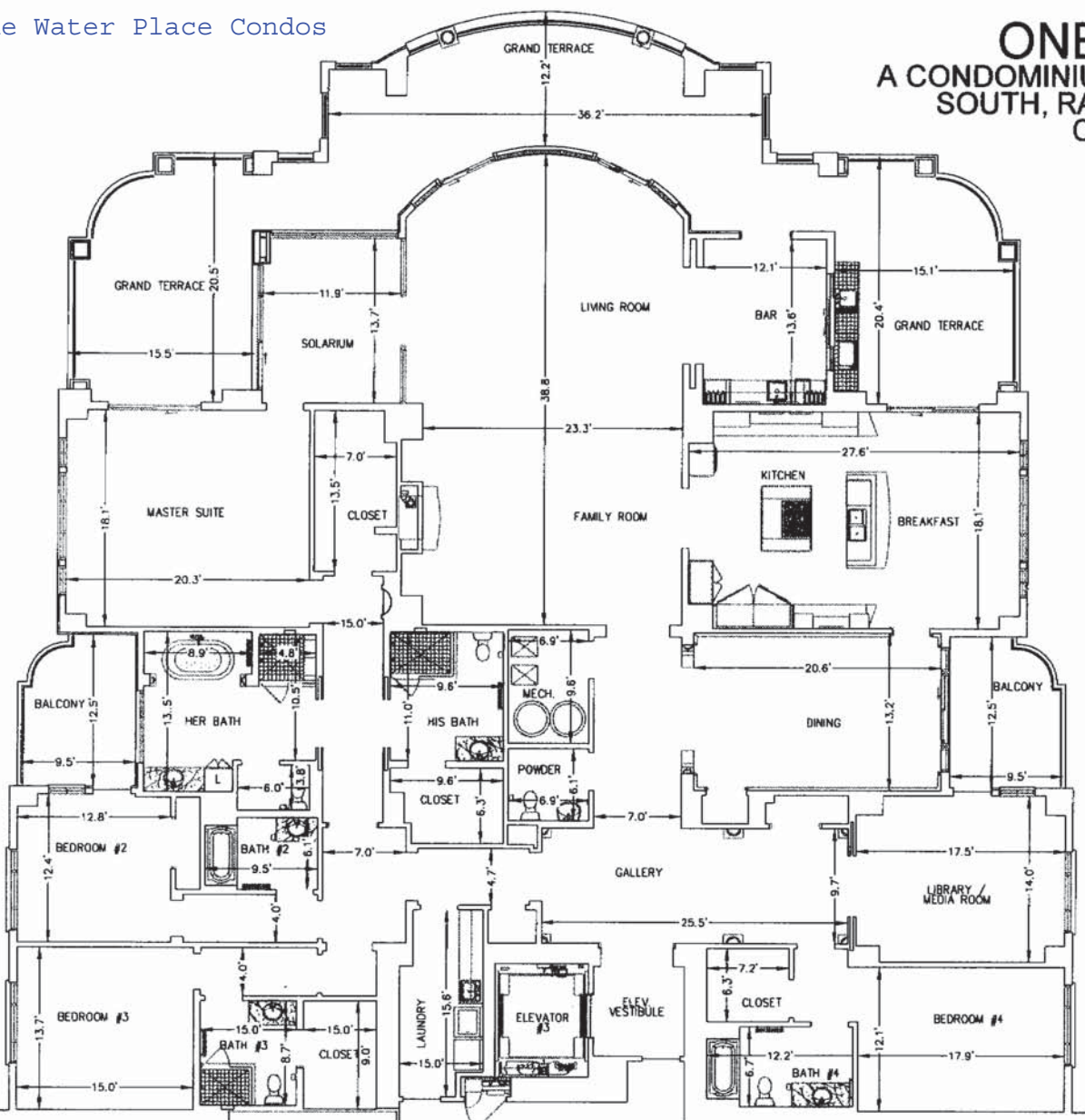


PREPARED BY:  
**Gustin, Cothorn & Tucker, Inc.**  
CIVIL ENGINEERING/LAND SURVEYING  
121 HART STREET NICEVILLE, FL 32578 (850) 678-5141

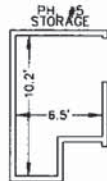
**ONE WATER PLACE**  
A CONDOMINIUM

One Water Place Condos

**ONE WATER PLACE**  
 A CONDOMINIUM, IN UNDIVIDED TOWNSHIP 2  
 SOUTH, RANGE 22 WEST, OKALOOSA  
 COUNTY, FLORIDA  
 JUNE 2007



BUILDING TWO  
 PENTHOUSE  
 UNIT ADDRESS  
 #PH05



Destin Real Estate  
 Tim Shepard  
[BrowseDestin.com](http://BrowseDestin.com)

**BUILDING #2  
 PENTHOUSE LEVEL  
 #PH05  
 TYPICAL FLOOR PLAN**

PREPARED BY:  
**Gustin, Cothorn & Tucker, Inc.**  
 CIVIL ENGINEERING/LAND SURVEYING  
 121 HART STREET MOBILE, FL 32578 (850) 678-5141

**ONE WATER PLACE  
 A CONDOMINIUM**

**NOTES:**  
 1. UNIT DIMENSIONS SHOWN HEREON MAY VARY 0.2±.  
 2. SEE SHEET 8 of 23 FOR STORAGE ROOM LOCATION

BK: 2792 PG: 2990