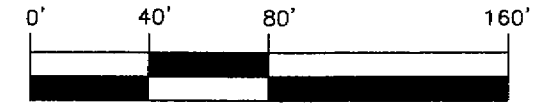


VILLA COYABA A CONDOMINIUM

GRAPHIC SCALE



(IN FEET)

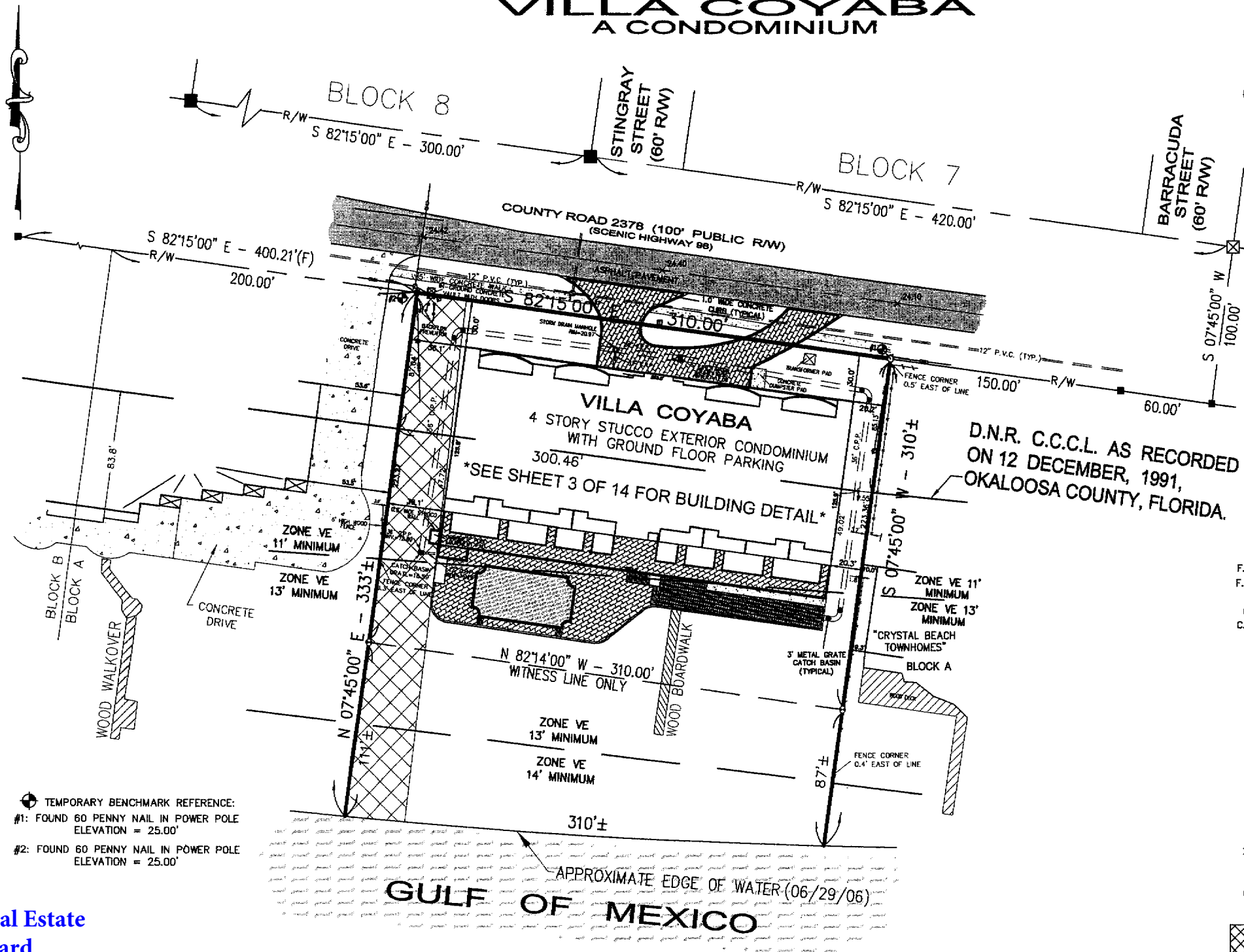
1 inch = 80 feet

DESCRIPTION:

THE EAST 310 FEET OF THE WEST 510 FEET OF BLOCK "A", CRYSTAL BEACH SUBDIVISION, AS RECORDED IN PLAT BOOK 1, PAGE 17, OF THE PUBLIC RECORDS OF OKALOOSA COUNTY, FLORIDA.

LEGEND:

- No. = NUMBER
- # = NUMBER
- = DISTANCE NOT TO SCALE
- L.B. = LICENSED BUSINESS
- L.S. = LICENSED SURVEYOR
- P.S.M. = PROFESSIONAL SURVEYOR AND MAPPER
- INV. = INVERT
- EL. = ELEVATION
- F.F.E. = FINISHED FLOOR ELEVATION
- ± = MORE OR LESS
- PVC = POLYVINYL CHLORIDE
- R/W = RIGHT OF WAY
- D.N.R. = DEPARTMENT OF NATURAL RESOURCES
- F.D.E.P. = FLORIDA DEPARTMENT OF ENVIRONMENTAL PROTECTION
- F.E.M.A. = FEDERAL EMERGENCY MANAGEMENT AGENCY
- CORP. = CORPORATION
- (TYP.) = TYPICAL
- C.C.C.L. = COASTAL CONSTRUCTION CONTROL LINE
- ID. = IDENTIFICATION
- INC. = INCORPORATED
- DWG. = DRAWING
- ☉ = CENTERLINE
- OHU = OVERHEAD UTILITIES
- = FOUND 1/2" CAPPED IRON ROD L.B. #3724
- = SET 1/2" CAPPED IRON ROD L.B. #3724
- ⊙ = SET 1/2" CAPPED IRON ROD L.B. #3724 (WITNESS MONUMENT)
- = FOUND 4" BY 4" CONCRETE MONUMENT L.B. #3724
- ⊠ = FOUND 4" BY 4" CONCRETE MONUMENT NO ID.
- ⊕ = SEWER MANHOLE
- ⊙ = UTILITY POLE
- ☎ = TELEPHONE BOX
- X 24.42 = SPOT ELEVATION AT "X"
- L.L.C. = LIMITED LIABILITY COMPANY
- & = AND
- C.P.P. = CORRUGATED PLASTIC PIPE
- ☆ = UTILITY POLE
- ▨ = PORTION OF PROPERTY IN COASTAL BARRIER ZONE



TEMPORARY BENCHMARK REFERENCE:
 #1: FOUND 60 PENNY NAIL IN POWER POLE
 ELEVATION = 25.00'
 #2: FOUND 60 PENNY NAIL IN POWER POLE
 ELEVATION = 25.00'