

\$25,500,000 - 10941 E County Hwy 30a Multiple, Inlet Beach

MLS® #998623

\$25,500,000

71 Bedroom, 71.00 Bathroom, 45,882 sqft
Condominium

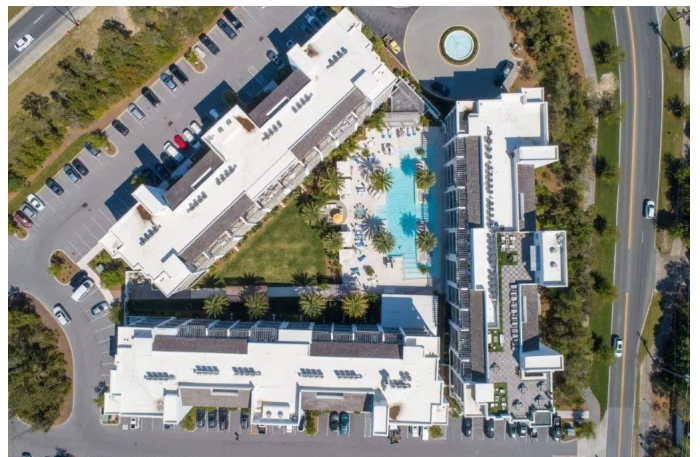
The Pointe, Inlet Beach, FL

Investment Opportunity | The Pointe - 31
Luxury Resort Residences

Presenting a rare institutional-scale opportunity to acquire 31 luxury resort condominium residences at The Pointe on 30A, ideally positioned along the highly sought-after Scenic Highway 30A corridor near Panama City Beach and just minutes from Rosemary Beach.

Located along the renowned Emerald Coast, this portfolio acquisition provides investors with immediate scale in one of Florida's most desirable luxury vacation markets. With strong tourism demand and a thriving short-term rental environment, the property offers significant potential for hospitality operators, private equity groups, and investors seeking income-producing coastal real estate. The offering consists of 31 premium condominium residences featuring spacious 2- and 3-bedroom floor plans designed for luxury accommodations and vacation rental performance. Each residence includes Restoration Hardware furnishings, open-concept living areas, fully equipped kitchens with Whirlpool appliances and gas/electric stovetops, stackable in-unit washer and dryer units, and 2-3 private balconies.

Select 3-bedroom Aqua Suites elevate the guest experience with private plunge pools,



oversized balconies, and expansive living areas designed to accommodate high-end vacation travelers and larger groups.

Owners and guests enjoy access to a full range of resort-style amenities including the Rooftop Sanctuary with panoramic Gulf views, a fire pit lounge, and bar seating accommodating up to 150 guests, ideal for private events, weddings, and gatherings. Additional amenities include a seasonally heated resort-style pool and hot tub, private cabanas, a fitness center featuring Peloton and Mirror interactive training systems, Tesla EV charging stations, stainless steel BBQ grilling stations, beach cruisers, and on-site beach chair service.

The property is located within one mile of multiple public beach access points providing convenient access to the sugar-white sand beaches of the Emerald Coast. Guests also benefit from nearby bike rentals and pedestrian-friendly access to the surrounding coastal communities. Conveniently located approximately 30 minutes from Northwest Florida Beaches International Airport, the property offers excellent accessibility for travelers while remaining close to the boutique shopping, acclaimed dining, and coastal lifestyle of the 30A corridor and the surrounding Rosemary Beach community.

Large-scale acquisition opportunities along Scenic 30A are extremely limited, making The Pointe one of the few portfolio offerings available within this premier Gulf Coast destination. The Pointe represents a compelling hospitality and vacation rental investment opportunity for institutional investors, hospitality groups, private equity funds, and family offices seeking portfolio-scale real estate along Florida's Emerald Coast.

Built in 2017

Essential Information

MLS® #	998623
Price	\$25,500,000
Bedrooms	71
Bathrooms	71.00
Full Baths	71
Square Footage	45,882
Year Built	2017
Type	Condominium
Sub-Type	Condominium
Style	N/A
Status	Active

Community Information

Address	10941 E County Hwy 30a Multiple
Area	18 - 30A East
Subdivision	The Pointe
City	Inlet Beach
County	Walton
State	FL
Zip Code	32461

Amenities

Utilities	Electric, Gas - Natural, Phone, Public Sewer, Public Water, TV Cable, Underground
View	Gulf
Water View	Gulf
Has Pool	Yes
Pool	Heated, In Ground

Interior

Interior Features	Breakfast Bar, Vaulted Ceiling(s), Handicap Provisions, Kitchen Island, Recessed Lighting, Owner's Closet, Pantry, Shelving, Washer/Dryer Hookup
Appliances	Dishwasher, Dryer, Freezer, Microwave, Washer, Tankless Water Heater
Heating	Central, Heat High Efficiency, Gas - Natural
Cooling	Central Air, Ceiling Fan(s)

Fireplace Yes
Fireplaces EPA Qualified Fireplace

Exterior

Exterior Features Outdoor Grill, Balcony, Columns, Hot Tub, Pavillion/Gazebo, Outdoor Shower, Rain Gutters
Windows Storm Window(s), Window Treatments
Roof Flat, Membrane
Construction Concrete, Frame, Masonite, Stucco, Steel Frame, Trim Wood, Siding CmntFbrHrdBrd, System Built
Foundation Slab

School Information

Elementary Dune Lakes
Middle Emerald Coast
High South Walton

Listing Details

Listing Office The Premier Property Group

DISCLAIMER: Information Deemed Reliable but not guaranteed. The information being provided is for consumers' personal, non-commercial use and may not be used for any purpose other than to identify prospective properties consumers may be interested in purchasing. All listings are provided courtesy of the Emerald Coast Association of Realtors, Copyright 2026, All rights reserved. Vendors Member Number : 28325
Listing information last updated on June 16th, 2026 at 10:37am CDT