

\$8,250,000 - 239 Pelican Cir, INLET BEACH

MLS® #973611

\$8,250,000

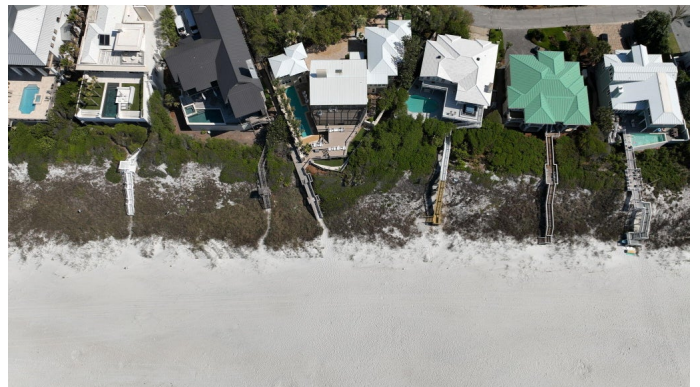
5 Bedroom, 5.00 Bathroom, 5,506 sqft
Detached Single Family on 0.34 Acres

CAMP CREEK LAKE, INLET BEACH, FL

Welcome to 239 Pelican Circle--an exceptional Gulf-front home tucked behind the gates of one of 30A's most private and coveted streets. Just steps from Alys Beach and minutes from Seacrest and Rosemary, this property blends location, privacy, and direct beach access into a rare opportunity along the Emerald Coast. Set on a generous .34-acre lot, this five-bedroom, five-bathroom property includes a detached guest house with its own private suite--perfect for visiting guests, extended family, or a private workspace. The layout is ideal for both full-time living and rental income, offering multiple living areas, ample outdoor space, and a seamless connection between indoor comfort and Gulf-front views. Recent updates include brand-new impact-rated sliders and windows, a fresh full exterior repaint, and a completely redone outdoor deck all designed to enhance the home's durability and coastal appeal. Inside, natural light pours through expansive openings, highlighting the panoramic Gulf views from the main living area and primary suite.

Outdoors, enjoy a spacious deck perched above the dunes with direct, private beach access. Whether you're hosting a sunset dinner or enjoying a quiet morning coffee, the setting is unforgettable.

With a strong rental track record and walkability to Alys Beach, Rosemary, and Seacrest's best shops and restaurants, this



home is as much a smart investment as it is a personal retreat. Properties like this Gulf-front, low-density, and south of 30A rarely become available. 239 Pelican Circle is your chance to own something truly special along 30A

Built in 1980

Essential Information

MLS® #	973611
Price	\$8,250,000
Bedrooms	5
Bathrooms	5.00
Full Baths	5
Square Footage	5,506
Acres	0.34
Year Built	1980
Type	Detached Single Family
Sub-Type	Detached Single Family
Style	Beach House
Status	Active

Community Information

Address	239 Pelican Cir
Area	30A East
Subdivision	CAMP CREEK LAKE
City	INLET BEACH
County	WALTON
State	FL
Zip Code	32461

Amenities

Amenities	Short Term Rental - Allowed
Utilities	Electric Available, Gas - Natural, Public Sewer Available, Public Water Available, TV Cable Available
Parking	Garage: Attached, Oversized
Is Waterfront	Yes
Waterfront	GULF
Water View	GULF

Has Pool	Yes
Pool	Pool - In-Ground, Private

Interior

Interior Features	Elevator, Fireplace, Furnished - All, Washer/Dryer Hookup
Cooling	A/C: Central Electric
Fireplace	Yes
Fireplaces	Fireplace
# of Stories	2

Exterior

Exterior Features	BBQ Pit/Grill, Deck Open, Patio Open, Pool - In-Ground
Lot Description	Within 1/2 Mile Of Water

School Information

Elementary	Dune Lakes
Middle	EMERALD COAST
High	SOUTH WALTON

Additional Information

Zoning	Residential Single Family
HOA Fees	0.00

Listing Details

Listing Office	Christies International Real Estate Emerald Coast
----------------	---

DISCLAIMER: Information Deemed Reliable but not guaranteed. The information being provided is for consumers' personal, non-commercial use and may not be used for any purpose other than to identify prospective properties consumers may be interested in purchasing. All listings are provided courtesy of the Emerald Coast Association of Realtors, Copyright 2025, All rights reserved. Vendors Member Number : 28325
Listing information last updated on May 16th, 2025 at 12:30am CDT