

# \$4,795,000 - 58 Santa Clara Street, Santa Rosa Beach

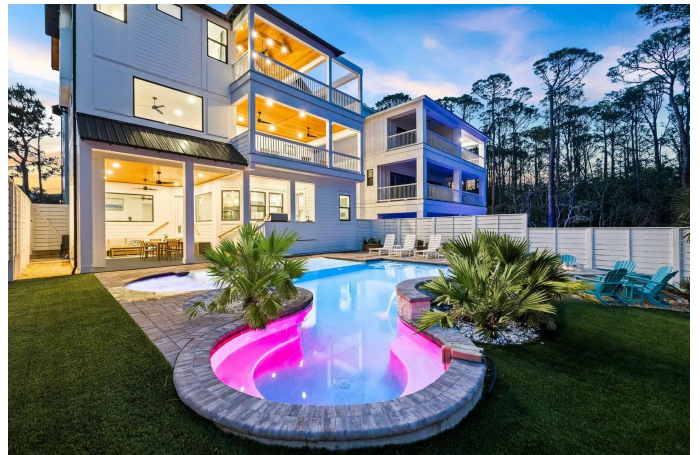
MLS® #1002357

## \$4,795,000

6 Bedroom, 8.00 Bathroom, 5,479 sqft  
Detached Single Family on 0.15 Acres

GULF SHORE MANOR, Santa Rosa Beach, FL

Recently built and thoughtfully designed for both luxury and performance, this exceptional Seagrove Beach retreat offers a rare combination of proven rental success--with over \$300,000 of rental income on the books for 2026--elevated finishes, and resort-style amenities, all just a short stroll to one of 30A's most desirable beach accesses. Spanning over 5,400 square feet, the home features six bedrooms, each with en-suite baths, comfortably accommodating up to 26 guests. A first-floor primary suite option with a private en-suite bath adds flexibility and convenience, ideal for owners or guests seeking main-level living. Offered fully furnished and turnkey, the property boasts a proven rental history and a layout intentionally designed to maximize both guest experience and revenue. The first level opens into a bright, open-concept living and kitchen space equipped for large groups, complete with double appliances including two refrigerators, two dishwashers, double ovens, and a standalone ice maker. This space flows seamlessly to the outdoor living area, where a zero-entry lagoon-style pool, separate hot tub, outdoor kitchen, putting green, and fire pit create a private backyard setting ideal for entertaining. The second floor is centered around recreation and gathering, featuring an expansive game room with pool table, shuffleboard, poker table, and a full bar with beverage fridge. A dedicated theater room offers an immersive viewing experience, while a convenient half bath serves the main living



area. Two well-appointed guest suites, each with en-suite bathrooms--one with a private balcony--complete the level, along with a covered porch overlooking the pool. On the third floor, additional guest accommodations include two king suites and a large bunk room designed to host multiple families. Offering an array of sleeping options, the bunk room has an ensuite bathroom with a triple vanity and two separate showers to fully accommodate all guests. A spacious secondary living area anchors the floor, complete with a coffee and beverage bar, and opens to a large covered deck with vaulted ceilings--an ideal setting for relaxed mornings or evening gatherings overlooking the surrounding landscape. Crowning the home, the fourth-floor rooftop deck captures sweeping Gulf views and unforgettable sunsets, offering a true vantage point rarely found this close to the beach. Distinct indoor and outdoor living areas provide ample space for guests to gather or spread out, while premium features such as a theater room, wood-clad porch ceilings, custom wall detailing in each guest suite, EV charger, and an included six-seater golf cart further enhance both lifestyle and rental appeal. Located in a non-HOA setting just steps from the Santa Clara beach access--complete with parking, restrooms, lifeguards, and a ramped walkway--this property combines convenience with one of the most sought-after stretches of coastline along 30A. Its proximity to Seaside, WaterColor, and Seagrove's dining and retail destinations, including Greenway Station, makes it an ideal choice for both investors and those seeking a high-end coastal retreat.

Built in 2024

## **Essential Information**

MLS® #

1002357

Price	\$4,795,000
Bedrooms	6
Bathrooms	8.00
Full Baths	6
Half Baths	2
Square Footage	5,479
Acres	0.15
Year Built	2024
Type	Detached Single Family
Sub-Type	Detached Single Family
Style	Beach House
Status	Active

### Community Information

Address	58 Santa Clara Street
Area	18 - 30A East
Subdivision	GULF SHORE MANOR
City	Santa Rosa Beach
County	Walton
State	FL
Zip Code	32459

### Amenities

Utilities	Gas - Natural, Public Sewer, Public Water, TV Cable
Parking	Garage Door Opener
# of Garages	1
View	Gulf
Water View	Gulf
Has Pool	Yes
Pool	Heated, In Ground

### Interior

Interior Features	Crown Molding, Hallway Bunk Beds, Kitchen Island, Recessed Lighting, Owner's Closet, Pantry, Wet Bar, Woodwork Painted
Appliances	Dishwasher, Disposal, Dryer, Microwave, Double Oven, Range Hood, Refrigerator, Washer, Tankless Water Heater
Heating	Central, Gas - Natural
Cooling	Central Air, Ceiling Fan(s)
# of Stories	4

## Exterior

Exterior Features	Outdoor Grill, Balcony, Private Yard, Outdoor Shower, Rain Gutters
Lot Description	See Remarks, Within 1/2 Mile to Water
Windows	Window Treatments
Roof	Metal
Construction	Siding CmntFbrHrdBrd

## School Information

Elementary	Dune Lakes
Middle	Emerald Coast
High	South Walton

## Additional Information

Zoning	Resid Single Family
--------	---------------------

## Listing Details

Listing Office	Scenic Sotheby's International Realty
----------------	---------------------------------------

DISCLAIMER: Information Deemed Reliable but not guaranteed. The information being provided is for consumers' personal, non-commercial use and may not be used for any purpose other than to identify prospective properties consumers may be interested in purchasing. All listings are provided courtesy of the Emerald Coast Association of Realtors, Copyright 2026, All rights reserved. Vendors Member Number : 28325

Listing information last updated on June 6th, 2026 at 5:22pm CDT