

\$1,500,000 - Lot 2 W County Hwy 30a, SANTA ROSA BEACH

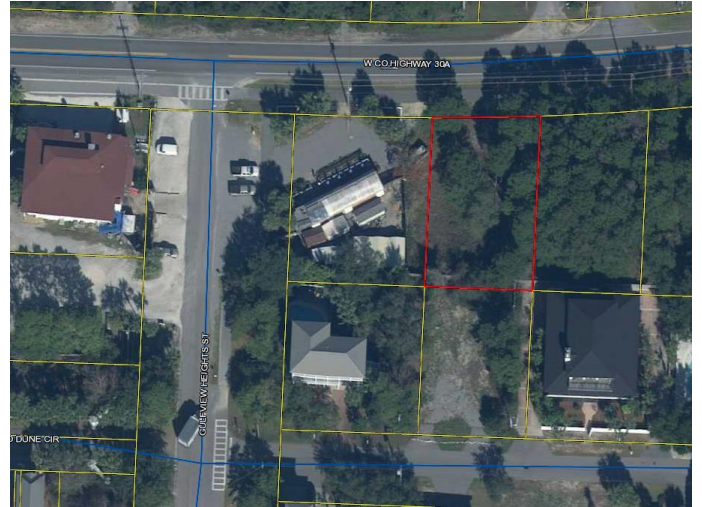
MLS® #871186

\$1,500,000

Bedroom, Bathroom, 9,148 sqft
Residential Land on 0.21 Acres

Gulfview Heights, SANTA ROSA BEACH, FL

Vacant lot ready for your customer to develop. Zoned for either commercial or residential. Opportunity and uses are in the documents section of this listing. This lot offers frontage on 30-A and is an easy walk to the Gulfview Heights Regional Beach access. Walking distance to: Gulf Place, Shunk Gulley, Perfect Pig, Pizza by the Sea and more! If you need a larger parcel, the adjacent lot can also be purchased.



Essential Information

MLS® #	871186
Price	\$1,500,000
Square Footage	9,148
Acres	0.21
Type	Residential Land
Sub-Type	Residential Land
Status	Active

Community Information

Address	Lot 2 W County Hwy 30a
Area	30A West
Subdivision	Gulfview Heights
City	SANTA ROSA BEACH
County	WALTON
State	FL
Zip Code	32459

Amenities

Utilities	Electric Available, Sewer Available
Features	Level, Within 1/2 Mile Of Water

Exterior

Lot Description	Level, Within 1/2 Mile Of Water
-----------------	---------------------------------

School Information

Elementary	Dune Lakes
Middle	Seaside
High	SOUTH WALTON

Additional Information

Zoning	County
HOA Fees	0.00

Listing Details

Listing Office	Five Star Properties RE FL Inc
----------------	--------------------------------

DISCLAIMER: Information Deemed Reliable but not guaranteed. The information being provided is for consumers' personal, non-commercial use and may not be used for any purpose other than to identify prospective properties consumers may be interested in purchasing.All listings are provided courtesy of the Emerald Coast Association of Realtors, Copyright2024, All rights reserved.Vendors Member Number : 28325
Listing information last updated on April 25th, 2024 at 4:30am CDT