

# \$649,000 - Xxx Henderson Resort Way 2201, DESTIN

MLS® #818210

## \$649,000

2 Bedroom, 2.00 Bathroom, 1,223 sqft  
Condominiums on 0 Acres

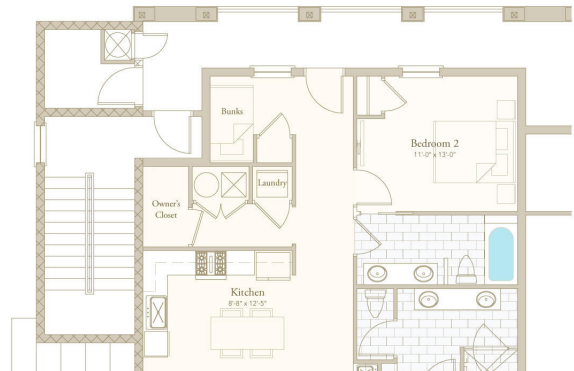
Parkside at the Henderson, DESTIN, FL

Introducing Parkside at Henderson Beach Resort, an elegant resort living retreat in the heart of Destin, Florida that is as unique as it is beautiful. Parkside offers a resort living getaway that is everything you've ever wanted and yet, is like nothing you've ever seen. The Residences will feature 10 ft ceilings, high-end fixtures and appliances, quartz counter tops, solid core doors, and all of the premium finishes you would come to expect from a resort property. Each building will feature covered, assigned parking, impact-rated doors and windows, and either pool or expansive gulf views. Upon completion, Parkside owners will enjoy full access to the Henderson Beach Resort amenities like the Salamander Spa, multiple pools, private beach access, and numerous dining options

Built in 2020

## Listing Information

MLS® #	818210
Price	\$649,000
Bedrooms	2
Bathrooms	2.00
Full Baths	2
Square Footage	1,223
Acres	0.00
Year Built	2020
Type	Condominiums



Sub-Type	Condominiums
Style	N/A
Status	Active

### **Community Information**

Address	Xxx Henderson Resort Way 2201
Area	DESTIN
Subdivision	Parkside at the Henderson
City	DESTIN
County	OKALOOSA
State	FL
Zip Code	32541

### **Amenities**

Extra Amenities	BBQ Pit/Grill, Beach, Elevators, Exercise Room, Game Room, Picnic Area, Pool, TV Cable Available, Pets Allowed
Utilities	Electric Available, Phone Available, Public Sewer Available, Public Water Available, TV Cable Available, Tap Fee Paid, Underground
Parking Spaces	2
Parking	Deeded, Garage: Attached
# of Garages	2
Has Pool	Yes
Pool	Community, Private

### **Interior**

Interior Features	Floor Tile, Floor WW Carpet New, Furnished - None, Lighting Recessed, Owner's Closet, Pantry, Washer/Dryer Hookup, Woodwork Painted
Appliances	Dishwasher, Dryer, Refrigerator W/Ice Maker, Stove/Oven Electric, Washer, Wine Refrigerator
Heating	Heat: Central Electric, Heat High Efficiency
Cooling	A/C: Central Electric, A/C: High Efficiency

### **Exterior**

Exterior	Concrete, Foundation Off Grade, Frame, Roof Dimensional Shingle, Siding Brick All, Siding CmntFbrHrdBrd
Exterior Features	Balcony
Windows	Double Paned Windows, Tinted Windows
Roof	Roof Dimensional Shingle
Construction	Frame
Foundation	Foundation Off Grade

## **School Information**

Elementary	DESTIN
Middle	DESTIN
High	FORT WALTON BEACH

## **Additional Information**

Days on Website	390
HOA Fees	587.48
HOA Fees Freq.	Monthly

## **Listing Details**

Listing Office            The Premier Property Group Seacrest Office

DISCLAIMER: Information Deemed Reliable but not guaranteed. The information being provided is for consumers' personal, non-commercial use and may not be used for any purpose other than to identify prospective properties consumers may be interested in purchasing. All listings are provided courtesy of the Emerald Coast Association of Realtors, Copyright2020, All rights reserved.

Listing information last updated on April 8th, 2020 at 8:45pm CDT